

TRUE NORTH
 NATIONAL GEOPHYSON DATA CENTER
 DECL. 277° E (8/31/2006)
 CHANGES 07' / YEAR

RUNWAY END COORDINATES			
EXISTING RUNWAY END	ELEVATION	LATITUDE	LONGITUDE
13	837.8'	N44°26'37.7"	W93°55'11.7"
31	867.2'	N44°26'16.7"	W93°51'42.4"
ULTIMATE RUNWAY END	ELEVATION	LATITUDE	LONGITUDE
13	837.8'	N44°26'37.7"	W93°55'11.7"
31	869.2'	N44°26'15.3"	W93°54'40.5"

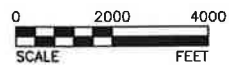
FAR PART 77 DIMENSIONS				
RUNWAY	PART 77 CODE SLOPE	INNER WIDTH	LENGTH	OUTER WIDTH
13/31	B(NP): 40:1	500'	10,000'	3,500'

OBSTRUCTIONS TABLE					
KEY NO.	TYPE	ELEVATION	PENETRATION	SURFACE IMPACTED	DISPOSITION
24-1467	TANK	1032'	+14'	HORIZ. SURFACE	TO REMAIN (1)

A (+) INDICATES A PENETRATION, A (-) INDICATES A DISTANCE BELOW THE AIRSPACE.

(1) WATER TANK IS RED OBSTRUCTION LIGHTED. NO HAZARD PER ASN 1995-AGL-2084-0E

NOTE:
 THIS MAP IS FOR ILLUSTRATIVE PURPOSES ONLY. ACTUAL LOCATION OF ZONING BOUNDARIES ON SPECIFIC PARCELS SHALL BE FIELD LOCATED BY A REGISTERED LAND SURVEY.



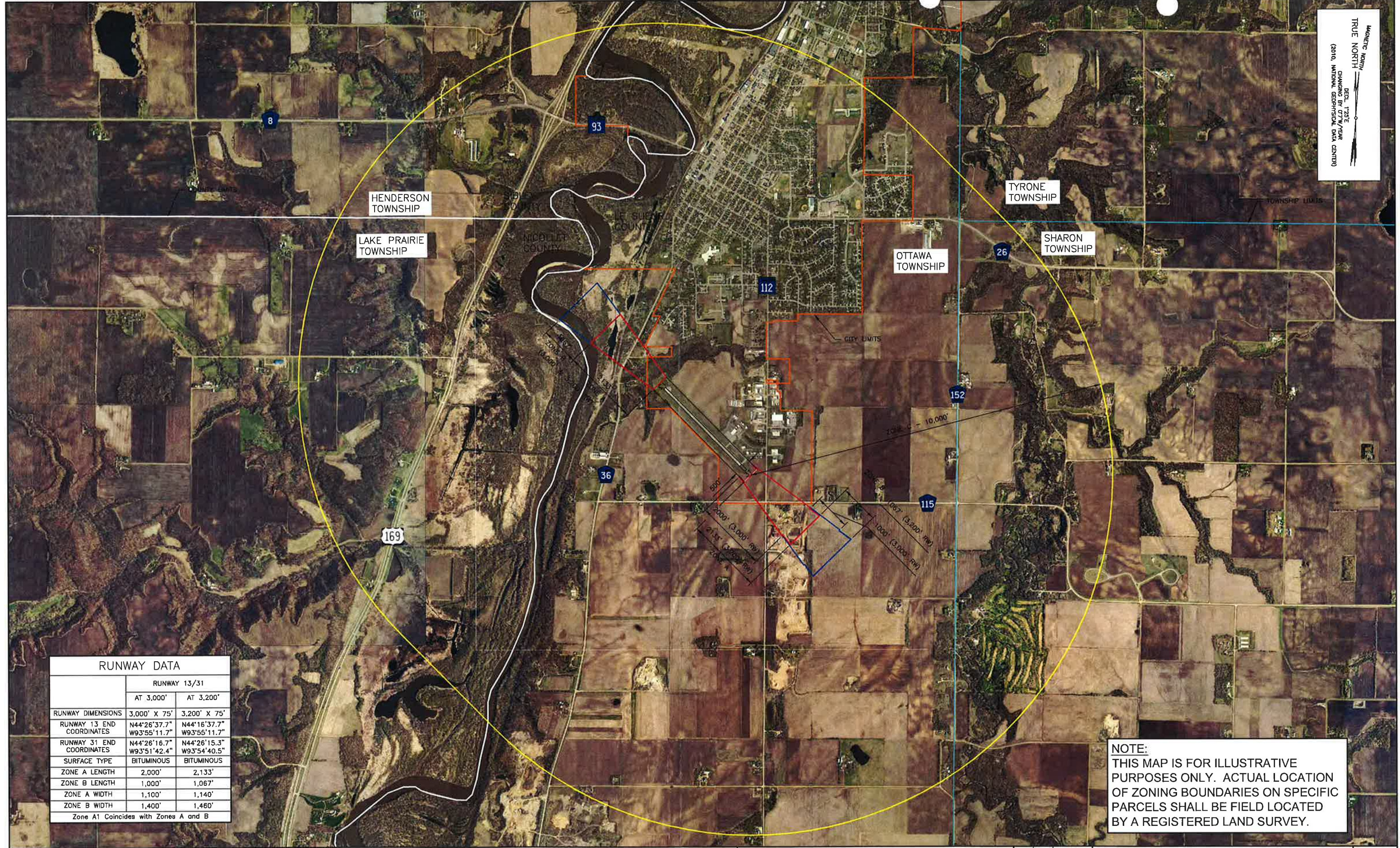
Approved at a Public Hearing on March 18th 2014

BOLTON & MENK, INC.
 Consulting Engineers & Surveyors
 MANKATO, MN FAIRMONT, MN SLEEPY EYE, MN WILLMAR, MN BURNSVILLE, MN
 CHASKA, MN RAMSEY, MN MAPLEWOOD, MN BRAINERD, MN AMES, IA

REV.	BY	DATE

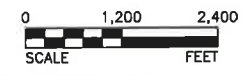
LE SUEUR MUNICIPAL AIRPORT
 AIRPORT ZONING ORDINANCE
 AIRSPACE MAP

MAGNETIC NORTH
 TRUE NORTH
 DEC. 17th 1981
 CHANGING BY 0.77"/YEAR
 (2010, NATIONAL GEOSPHERICAL DATA CENTER)



RUNWAY DATA		
	RUNWAY 13/31	
	AT 3,000'	AT 3,200'
RUNWAY DIMENSIONS	3,000' X 75'	3,200' X 75'
RUNWAY 13 END COORDINATES	N44°26'37.7" W93°55'11.7"	N44°16'37.7" W93°55'11.7"
RUNWAY 31 END COORDINATES	N44°26'16.7" W93°51'42.4"	N44°26'15.3" W93°54'40.5"
SURFACE TYPE	BITUMINOUS	BITUMINOUS
ZONE A LENGTH	2,000'	2,133'
ZONE B LENGTH	1,000'	1,067'
ZONE A WIDTH	1,100'	1,140'
ZONE B WIDTH	1,400'	1,460'
Zone A1 Coincides with Zones A and B		

NOTE:
 THIS MAP IS FOR ILLUSTRATIVE PURPOSES ONLY. ACTUAL LOCATION OF ZONING BOUNDARIES ON SPECIFIC PARCELS SHALL BE FIELD LOCATED BY A REGISTERED LAND SURVEY.



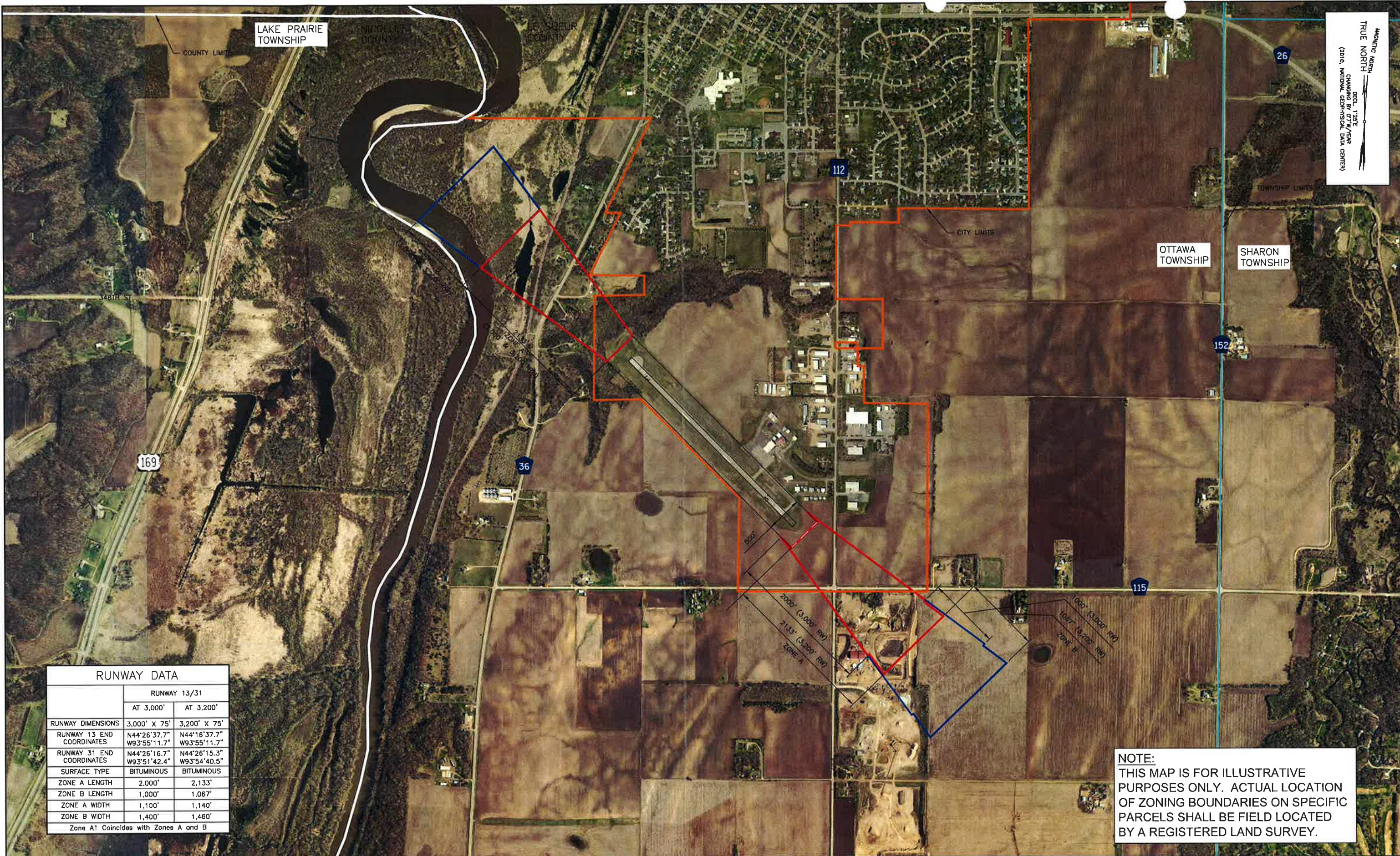
Approved at a Public Hearing on March 18th 2014

BOLTON & MENK, INC.
 Consulting Engineers & Surveyors
 MANKATO, MN FAIRMONT, MN SLEEPY EYE, MN WILLMAR, MN
 BURNSVILLE, MN CHASKA, MN RAMSEY, MN MAPLEWOOD, MN AMES, IA

REV	BY	DATE

LE SUEUR MUNICIPAL AIRPORT
 AIRPORT ZONING ORDINANCE
LAND USE SAFETY ZONES MAP

MANKATO, MN
 TRUE NORTH
 DEC. 1, 1985
 CHANGING BY 0.7"/YEAR
 (2010, NATIONAL GEOSPATIAL DATA CENTER)



RUNWAY DATA		
	RUNWAY 13/31	
	AT 3,000'	AT 3,200'
RUNWAY DIMENSIONS	3,000' X 75'	3,200' X 75'
RUNWAY 13 END COORDINATES	N44°26'37.7" W93°55'11.7"	N44°16'37.7" W93°55'11.7"
RUNWAY 31 END COORDINATES	N44°26'16.7" W93°51'42.4"	N44°26'15.3" W93°54'40.5"
SURFACE TYPE	BITUMINOUS	BITUMINOUS
ZONE A LENGTH	2,000'	2,133'
ZONE B LENGTH	1,000'	1,067'
ZONE A WIDTH	1,100'	1,140'
ZONE B WIDTH	1,400'	1,460'
Zone A1 Coincides with Zones A and B		



NOTE:
 THIS MAP IS FOR ILLUSTRATIVE PURPOSES ONLY. ACTUAL LOCATION OF ZONING BOUNDARIES ON SPECIFIC PARCELS SHALL BE FIELD LOCATED BY A REGISTERED LAND SURVEY.



Approved at a Public Hearing on March 18th 2014

BOLTON & MENK, INC.
 Consulting Engineers & Surveyors
 MANKATO, MN FAIRMONT, MN SLEEPY EYE, MN WILLMAR, MN
 BURNSVILLE, MN CHASKA, MN RAMSEY, MN MAPLEWOOD, MN AMES, IA

REV.	BY	DATE

LE SUEUR MUNICIPAL AIRPORT
 AIRPORT ZONING ORDINANCE
LAND USE SAFETY ZONES MAP—
 RUNWAY APPROACHES

EXHIBIT
 2.1